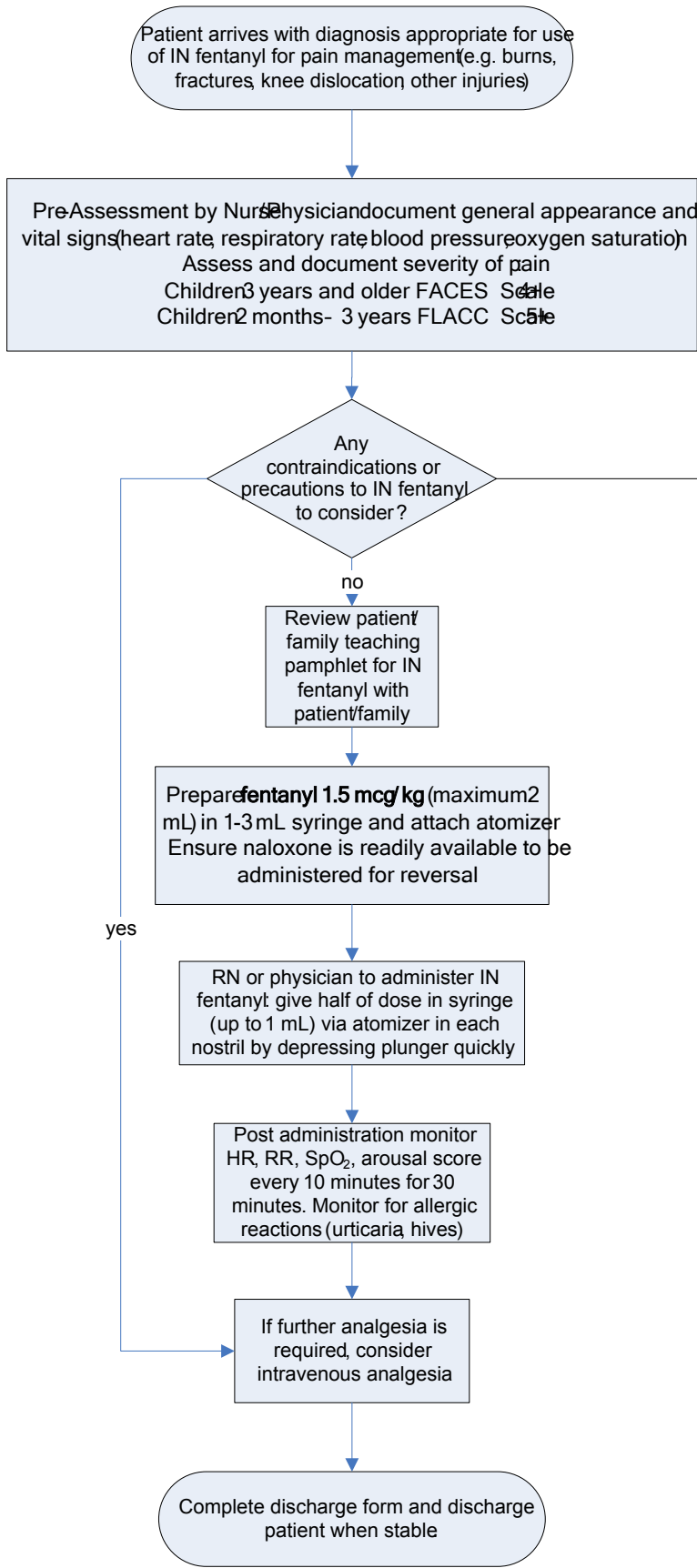


APPENDIX A: DECISION ALGORITHM FOR ADMINISTRATION OF INTRANASAL FENTANYL IN THE PEDIATRIC EMERGENCY DEPARTMENT



- Hypersensitivity or intolerance to fentanyl or its compounds
- Bilateral occluded nasal passages (may cause unreliable drug delivery)
- Epistaxis
- Weight above 70 kg (volume of medication would exceed 2 mL total)
- Age less than 1 month
- Renal or hepatic impairment or biliary disease
- Hypotension (per age)
- Pulmonary or cardiovascular impairment
- Difficult airways
- Obstructive sleep apnea
- Head injury
- Seizure disorder
- Increased Intracranial Pressure (ICP)
- Altered mental status
- GI obstruction
- Inflammatory bowel disease
- MAO inhibitor antidepressants within the last 14 days
- Prior dosing with narcotic (may produce drug accumulation)
- Co-administered sedatives/CNS depressants/Respiratory depressants and comorbid medical conditions may enhance respiratory and circulatory depression and may require modification to dose