



PED ED Asthma
(Page 1 of 2)

DATE ____/____/____ TIME ____
DD MM YYYY

BSA _____ M2

WEIGHT: _____ KG HEIGHT: _____ CM

ALLERGY CAUTION sheet reviewed

Status/Admit/Transfer/Discharge

▶ **BC Children's Hospital Emergency Department Asthma Guidelines**

Transfer to Clinical Decision Unit (CDU)

Isolation Precautions

Contact Droplet Airborne Airborne / Contact Droplet / Contact Contact PLUS

Vital Signs

Vital signs and PRAM Score every _____ hours

Pulse oximetry, continuous

Cardiac monitoring, continuous

Medications

See MEDICATION RECONCILIATION for home medications

Other medication: _____

Mild PRAM Score 0 to 3

salbutamol 100 mcg/puff metered-dose inhaler (MDI) with spacer

5 puff inhaled Q20MIN for 2 doses in the first hour (weight LESS than 20 kg)

10 puff inhaled Q20MIN for 2 doses in the first hour (weight GREATER than or EQUAL to 20 kg)

Moderate PRAM Score 4 to 7

salbutamol 100 mcg/puff metered-dose inhaler (MDI) with spacer

5 puff inhaled Q20MIN for 3 doses in the first hour (weight LESS than 20 kg)

10 puff inhaled Q20MIN for 3 doses in the first hour (weight GREATER than or EQUAL to 20 kg)

PRN salbutamol 100 mcg/puff metered-dose inhaler (MDI) with spacer

5 puff inhaled Q60MIN PRN PRAM greater than or equal to 4 (weight LESS than 20 kg)

10 puff inhaled Q60MIN PRN PRAM greater than or equal to 4

(weight GREATER than or EQUAL to 20 kg)

ipratropium 20 mcg/puff metered-dose inhaler (MDI) with spacer

3 puff inhaled Q20MIN for 3 doses in the first hour (weight LESS than 20 kg)

6 puff inhaled Q20MIN for 3 doses in the first hour (weight GREATER than or EQUAL to 20 kg)

▶ **Steroids**

dexamethasone _____ mg (0.6 mg/kg/dose) PO once (Maximum 16 mg/dose) now

prednisolONE _____ mg (1 mg/kg/dose) PO once (Maximum 60 mg/dose) now

methylPREDNISolone _____ mg (1 mg/kg/dose) IV once (Maximum 60 mg/dose) now

Severe PRAM Score 8 to 12

salbutamol 100 mcg/puff metered-dose Inhaler (MDI) with spacer

5 puff inhaled Q20MIN for 3 doses in the first hour (weight LESS than 20 kg)

10 puff inhaled Q20MIN for 3 doses in the first hour (weight GREATER than or EQUAL to 20 kg)

PRN salbutamol 100 mcg/puff metered-dose Inhaler (MDI) with spacer

5 puff inhaled Q30MIN PRN PRAM greater than or equal to 4 (weight LESS than 20 kg)

10 puff inhaled Q30MIN PRN PRAM greater than or equal to 4

(weight GREATER than or EQUAL to 20 kg)

5 puff inhaled Q60MIN PRN PRAM greater than or equal to 4 (weight LESS than 20 kg)

10 puff inhaled Q60MIN PRN PRAM greater than or equal to 4

(weight GREATER than or EQUAL to 20 kg)

Signature: _____ Print Name: _____

College ID: _____ Pager: _____

Disclaimer Message

The following information, **PTN Review Date: June 21, 2016** **PTN# EDASTHv2** **Exp Date: June, 2019** **Page 1 of 2** en's). Agencies other than BC Children's or BC Women's should use this information as a guideline for reference purposes only. All materials are the property of BC Children's and BC Women's and may only be reprinted in whole or in part with our expressed permission. Contact PolicyCoordinator@cw.bc.ca with questions.

Date/Time Generated
Sep 29, 2016 18:16

Generated By
Anonymous



PED ED Asthma
(Page 2 of 2)

DATE ____/____/____ TIME ____
DD MM YYYY

BSA _____ M2

WEIGHT: _____ KG HEIGHT: _____ CM

ALLERGY CAUTION sheet reviewed

Severe PRAM Score 8 to 12 (Continued)

salbutamol

- 5 mg NEB Q20MIN for 3 doses in the first hour
- 5 mg NEB Q10MIN continuously
- 5 mg NEB Q60MIN

PRN salbutamol

- 5 mg NEB Q30MIN PRN PRAM greater than or equal to 4
- 5 mg NEB Q60MIN PRN PRAM greater than or equal to 4

ipratropium 20 mcg/puff metered-dose inhaler (MDI)

- 3 puff inhaled Q20MIN for 3 doses in the first hour (weight LESS than 20 kg)
- 6 puff inhaled Q20MIN for 3 doses in the first hour (weight GREATER than or EQUAL to 20 kg)

ipratropium

- 0.25 mg NEB Q20MIN for 3 doses in the first hour (weight LESS than 20 kg)
- 0.5 mg NEB Q20MIN for 3 doses in the first hour (weight GREATER than or EQUAL to 20 kg)

▶ **Steroids**

- dexamethasone _____ mg (0.6 mg/kg/dose) PO once (Maximum 16 mg/dose) now
- prednisolONE _____ mg (1 mg/kg/dose) PO once (Maximum 60 mg/dose) now
- methylPREDNISolone _____ mg (1 mg/kg/dose) IV once (Maximum 60 mg/dose) now

Adjunctive Medications

magnesium sulfate

- _____ mg (25 to 50 mg/kg/dose) IV once (Maximum 2000 mg/dose)

▶ **Consider BIPAP as adjunctive therapy for severe asthma**

IV Infusions

▶ **Isotonic fluids are preferred as initial maintenance fluids**

- Dextrose 10% and 0.9% Sodium Chloride IV _____ mL/h (for patients less than 5 kg)
- Dextrose 5% and 0.9% Sodium Chloride IV _____ mL/h (for patients greater than 5 kg)
- 0.9% Sodium Chloride IV _____ mL/h

▶ **Consider fluid bolus if clinical signs of dehydration**

- 0.9% Sodium Chloride _____ mL (10 mL/kg) IV over _____ minutes
- 0.9% Sodium Chloride _____ mL (20 mL/kg) IV over _____ minutes

Nutrition

- Regular diet
- Other _____

Respiratory

- Notify provider if oxygen saturation less than 92% or PRAM greater than or equal to 8

Signature: _____ Print Name: _____

College ID: _____ Pager: _____

PTN Review Date: June 21, 2016

PTN# EDASTHv2

Exp Date: June, 2019

Page 2 of 2

Disclaimer Message The following information, i.e. guideline/educational material/policy or procedure, has been developed for use only within BC Children's Hospital (BC Children's) and BC Women's Hospital and Health Centre (BC Women's). Agencies other than BC Children's or BC Women's should use this information as a guideline for reference purposes only. All materials are the property of BC Children's and BC Women's and may only be reprinted in whole or in part with our expressed permission. Contact PolicyCoordinator@cw.bc.ca with questions.

Date/Time Generated Sep 29, 2016 18:16

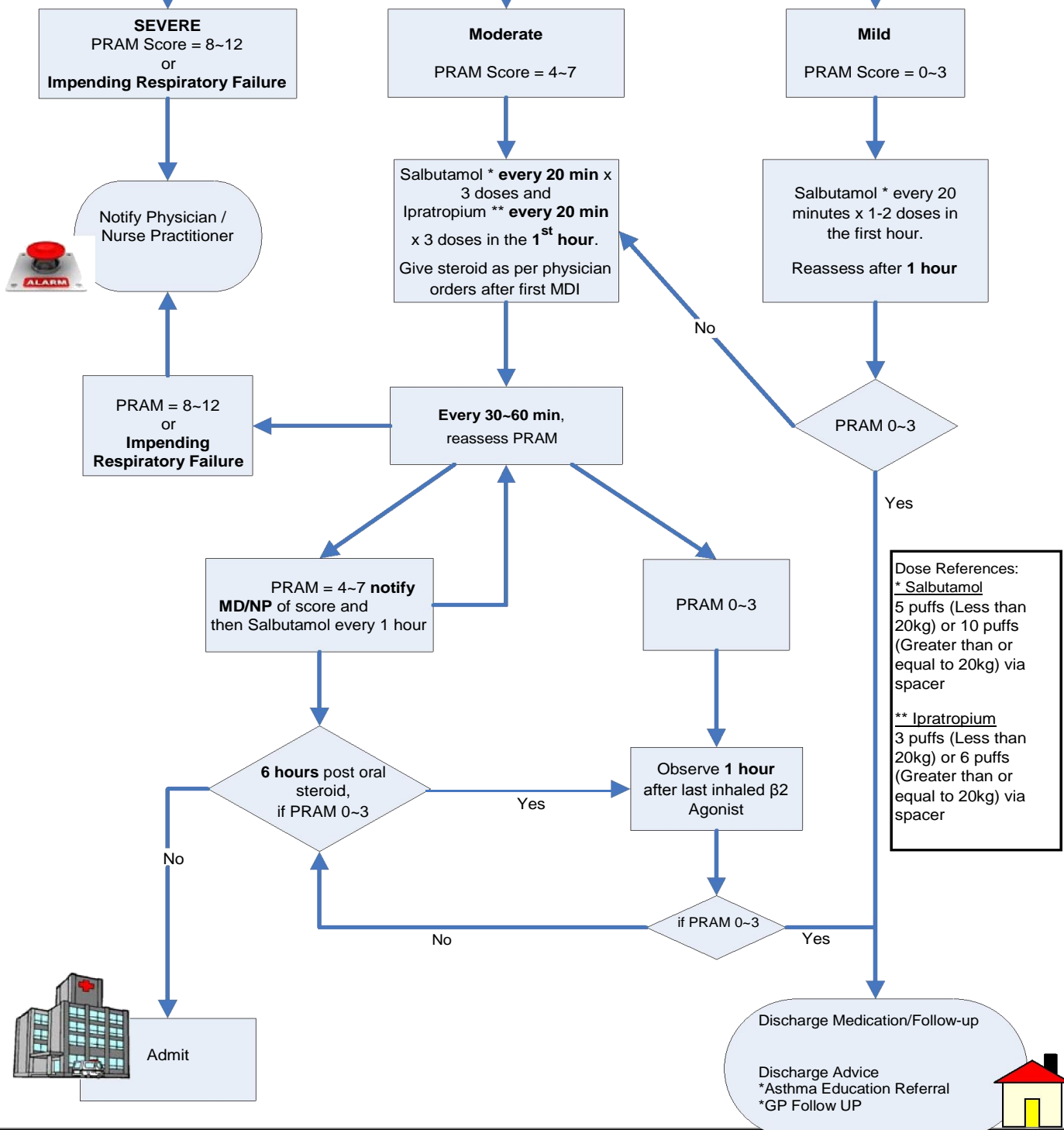
Generated By Anonymous

Emergency Department Management Pathway of Asthma

Severity Classification	PRAM CLINICAL Score
Mild	0-3
Moderate	4-7
Severe	8-12
Impending Respiratory Failure	Regardless of score, presence of: lethargy, cyanosis, decreasing respiratory effort, and/or rising pCO2

Children greater than or equal to 1 yr and less than 17 yr presenting with wheezing or respiratory distress, and
 *Diagnosed to have **asthma**, or
 *Treated **2 times** prior with a **bronchodilator** for wheezing

Moderate & Mild pathways may be Nurse Initiated



Dose References:
 * Salbutamol
 5 puffs (Less than 20kg) or 10 puffs (Greater than or equal to 20kg) via spacer
 ** Ipratropium
 3 puffs (Less than 20kg) or 6 puffs (Greater than or equal to 20kg) via spacer